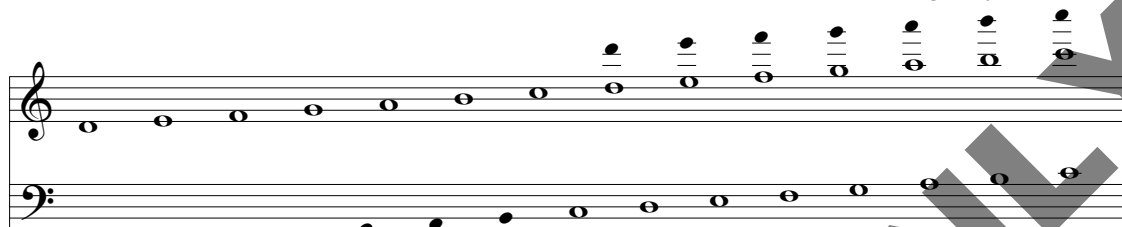


# Bring a Torch, Jeanette, Isabella

3 or 5 octaves / Level 2

Traditional French Melody  
Arranged by Priscilla Wentworth



3-octave choirs omit notes in ( )  
Mallets required for all bass clef *staccato* notes.

*Delicately* ♩ = 120

© Copyright 2016 Broadman Press (SESAC) (admin. by LifeWay Worship c/o Music Services, [www.musicservices.org](http://www.musicservices.org)).

All rights reserved. CCLI # 7050596

Possession of a CCLI license does not grant permission to make copies of this piece of music.

For clarification of the rights CCLI grants, please call 1 (800) 234-2446. When periodical is out of print, a license to reprint can be requested via the Web: [www.musicservices.org/license](http://www.musicservices.org/license)

Handbells, Fall 2016

Handbell musical score for 'Bring a Torch, Jeanette, Isabella—2'. The score is written for two staves (treble and bass clef) and consists of 26 measures. The music is in 2/4 time. Measures 13-16 show a sequence of chords and single notes. Measures 17-20 feature a melodic line in the treble staff with a mezzo-piano (*mp*) dynamic. Measures 21-23 show a continuation of the melodic line. Measures 24-26 show a final sequence of chords and single notes, with a piano (*p*) dynamic in measure 25 and a mezzo-piano (*mp*) dynamic in measure 26. A large diagonal watermark 'FOR PREVIEW ONLY' is overlaid across the score.

Handwritten musical score for piano, measures 27 through 41. The score is written on a grand staff (treble and bass clefs). The music features a variety of chords and melodic lines. Measure 27 starts with a *mf* dynamic. Measure 30 has a *p* dynamic. Measure 31 has a *mp* dynamic. Measure 32 has a *mf* dynamic. Measure 34 has a *mp* dynamic. Measure 35 has a *p* dynamic. Measure 38 has a *p* dynamic. Measure 41 ends with a double bar line. The score includes a large, diagonal watermark reading "FOR PREVIEW ONLY".

Measures 27-41. Dynamics: *mf*, *p*, *mp*, *mf*, *mp*, *p*, *p*. Performance markings: *TD*, *R*, *(S)*.