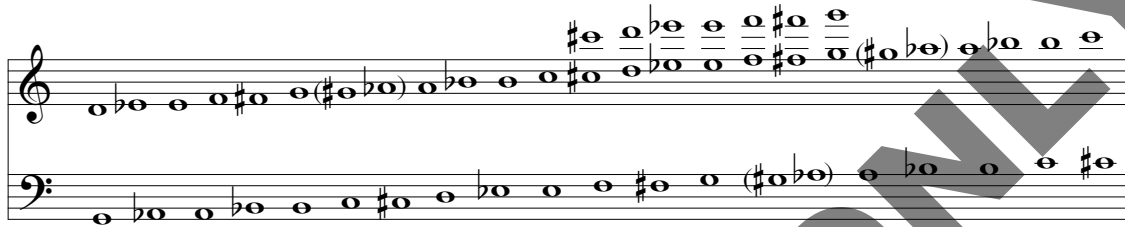


All Hail the Power of Jesus' Name

CORONATION and DIADEM

4 octaves / Level 3

Arranged by Carl Seal



Moderato ♩ = 88

All Hail the Power of Jesus' Name (CORONATION) (Oliver Holden)

Musical notation for the main body of the hymn, consisting of eight measures. The notation is in 4/4 time and includes dynamic markings such as *mp*, *cresc.*, *f*, and *mf*. The melody is written in a treble staff, and the bass line is written in a bass staff. The piece is marked with measure numbers 1 through 8.

© Copyright 2016 Broadman Press (SESAC) (admin. by LifeWay Worship c/o Music Services, www.musicservices.org).

All rights reserved.

Possession of a CCLI license does not grant permission to make copies of this piece of music.

For clarification of the rights CCLI grants, please call 1 (800) 234-2446. When periodical is out of print, a license to reprint can be requested via the Web: <http://www.musicservices.org/license>

Handbells, Winter 2016-2017

Handbell score for "All Hail the Power of Jesus' Name—2". The score is written for two staves (treble and bass clef) and consists of 23 measures. The music is in 3/4 time and features a variety of rhythmic patterns, including eighth notes, quarter notes, and half notes. The score is divided into four systems, with measures 9-11, 12-13, 14-16, and 17-19 in the first system, 20-22 in the second, and 23 in the third. The final measure (23) is marked with a mezzo-forte (*mf*) dynamic. A large, diagonal watermark reading "FOR PREVIEW ONLY" is overlaid across the score.

Measures 9-11: Treble clef has a half note G4, a quarter note A4, and a quarter note B4. Bass clef has a half note G3, a quarter note A3, and a quarter note B3. Measure 10 has a quarter rest in the bass. Measure 11 has a quarter note G4 in the treble and a quarter note G3 in the bass.

Measures 12-13: Treble clef has a half note G4, a quarter note A4, and a quarter note B4. Bass clef has a half note G3, a quarter note A3, and a quarter note B3. Measure 13 has a quarter rest in the bass.

Measures 14-16: Treble clef has a half note G4, a quarter note A4, and a quarter note B4. Bass clef has a half note G3, a quarter note A3, and a quarter note B3. Measure 16 has a quarter rest in the bass.

Measures 17-19: Treble clef has a half note G4, a quarter note A4, and a quarter note B4. Bass clef has a half note G3, a quarter note A3, and a quarter note B3. Measure 19 has a quarter rest in the bass.

Measures 20-22: Treble clef has a half note G4, a quarter note A4, and a quarter note B4. Bass clef has a half note G3, a quarter note A3, and a quarter note B3. Measure 22 has a quarter rest in the bass.

Measure 23: Treble clef has a half note G4, a quarter note A4, and a quarter note B4. Bass clef has a half note G3, a quarter note A3, and a quarter note B3. The final measure is marked with a mezzo-forte (*mf*) dynamic.

All Hail the Power of Jesus' Name (DIADEM) (James Ellor)

Handbell score for measures 24 through 41. The score is written for two staves (treble and bass clef) and includes dynamic markings and performance instructions.

Measures 24-27: Treble staff has chords; bass staff has a descending eighth-note line.

Measures 28-31: Treble staff has chords; bass staff has a steady eighth-note accompaniment.

Measures 32-35: Treble staff has chords; bass staff has a steady eighth-note accompaniment. Measure 32 is marked *mp*.

Measures 36-38: Treble staff has chords; bass staff has a steady eighth-note accompaniment. Measure 37 is marked *cresc. poco a poco*.

Measures 39-41: Treble staff has chords; bass staff has a steady eighth-note accompaniment. Measure 40 is marked *mf*.

42 43 44 45

46 47 48 49

50 51 52 53

54 55 56 57

cresc. *ff rit.* *mf*

58 *Slower* ♩ = 72 59 60

Handbell score for "All Hail the Power of Jesus' Name"—5. The score is written for five handbells, indicated by the five staves in each system. The key signature is one sharp (F#). The score is divided into measures 61 through 78. Measure 61 starts with a treble clef and a key signature of one sharp. Measures 62-63 show a sequence of chords. Measure 64 begins with a *cresc.* marking. Measures 65-66 show a sequence of chords, with a *mf* marking at measure 66. Measure 67 features a *f* marking and a wavy line above the staff. Measures 68-70 show a sequence of chords, with a *f* marking at measure 70. Measures 71-72 show a sequence of chords. Measures 73-74 show a sequence of chords. Measures 75-76 show a sequence of chords, with a *molto rit.* marking at measure 76. Measures 77-78 show a sequence of chords, with a *ff* marking at measure 77. The score ends with a double bar line at measure 78.

61 62 63 64 65 66 67 68 69 70 71 72 73 74 75 76 77 78

cresc. *mf* *f* *f* *molto rit.* *ff*

SK SK SK R