

Gloria

Words and Music by
ISRAEL HOUGHTON
and CINDY CRUSE-RATCLIFF
Arranged by Bradley Knight

Latin feel ♩ = 124

52

N.C.

G¹³

*Left hand plays upstem notes; electric bass plays cued part or sim.

© Copyright 2001 and this arrangement © copyright 2018 Integrity's Praise! Music (BMI)/
Sound of the New Breed (BMI)/My Other Publishing Company (BMI)/
Lakewood Ministries Music (BMI) (admin. at CapitolCMGPublishing.com).
All rights reserved. Used by permission. CCLI #3677119

Possession of a CCLI license does not grant permission to make copies of this music.
For clarification of the rights CCLI grants, please call 1-800-234-2446.

13

SOLO *f*

13

N.C. G¹³ A^{b13} A⁷(#5) N.C.

The

CHOIR *mf*

The

15

name of the Lord is a strong and might - y tow - er,
name of the Lord is an ev - er - last - ing prom - ise

name of the Lord the
name of the Lord of

Dm

G⁷

15

17

righ - teous run in and are safe.
 good - ness and mer - cy and grace.

Dm G7 A7 (#9#5)

19

Heav - en and earth are held with - in His pow - er.
 Ev - er - y na - tion will bow be - fore Je - sus.

Heav - en and earth
 Ev - er - y na - tion

Dm G7

26

Glo - ri - a! Glo - ri - a!

Dm G7 Dm G7

29

unison
Yes - ter - day, to - day, and for - ev - er, Glo - ri - a!
unison

Gm7 Gm7 F Gm7 E A7(#9#5) N.C.

32

(ad lib)

Dm G7 Dm G7

35

A7(#9#5) Dm G7

38

SOLO *f*

The
mf

The

N.C.

Em G Em G Dm G

40

name of the Lord is a strong — and might - y tow - er,
name of the Lord is an ev - er - last - ing prom - ise

name of the Lord
name of the Lord

The
of

Dm

G7

40

42

righ - teous run in and are safe.
 good - ness and mer - cy and grace.

Dm G7 A7(#9#5)

42

44

Heav - en and earth are held with - in His pow - er.
 Ev - er - y na - tion will bow be - fore Je - sus.

Heav - en and earth
 Ev - er - y na - tion

Dm G7

44

57 (1st time)

58 (2nd time)

1

(to meas. 40)

46

unison

The

Glo - ry to His name. _____

The

unison

Gm⁷

A⁷(#9#5)

1

(to meas. 40)

46

48

2

(SOLO may ad lib with CHOIR)

And we sing,

Glo - ri - a!

2

N.C.

Dm

G⁷

48

51

Glo - ri - a! Glo - ri - a!

Dm G7 Dm G7

54 *unison*

Yes - ter - day, to - day, and for - ev - er, Glo - ri - a!

unison

Gm7 Gm7/F Gm7/E A7(#9#5) N.C.

(Drum fill)

57

DM7/A Em7/A D2/A

60

Em7/A DM7/A Em7/A

63

Glo -

D
A

Em7
A

DM7
A

66

ri - a!

Em7
A

D
A

A

69

In ex - cel - sis De - o. Glo -

D F# D G D A A DM7 A

69

72

ri - a!

G B D F# E G#

72

75

60

(slide)

(ad libs end)

In ex - cel - sis De - o.

D
F#D
GGm(M7)
Bb

A

75

(ad lib)

78

78

80

mf unisonGlo - ri - a! _____
unison

Dm

Dm(M7)

80

82

Glo - ri - a! _____

Dm⁷G⁷Bb⁷

82

84

C⁷

Dm

A⁷(#9#5)

84

87

Glo - ri - a! _____

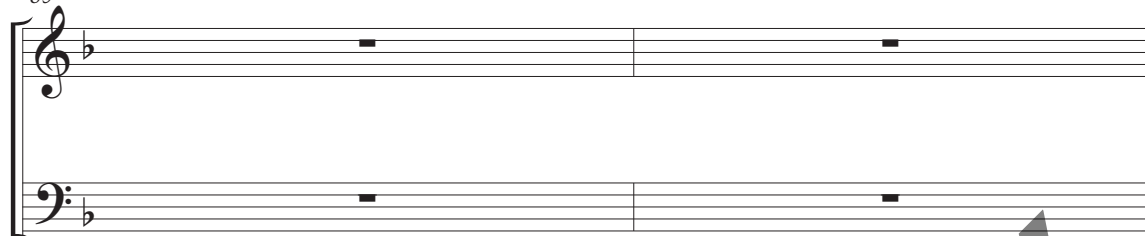
Glo - ri - a! _____

Dm

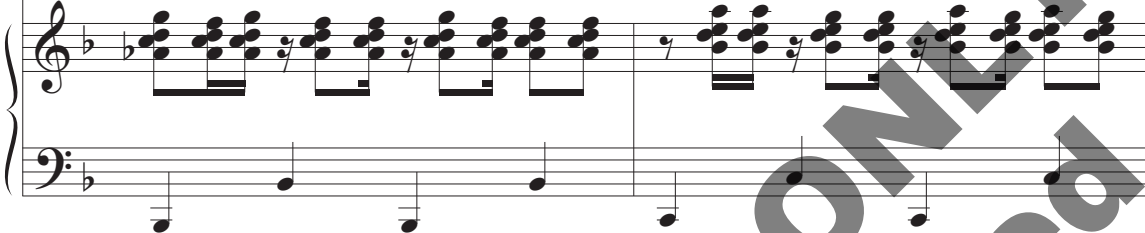
Dm(M⁷)Dm⁷G⁷

87

89

B \flat ⁹C⁷

89



91



Glo - ri - a! _____

Glo - ri - a! _____

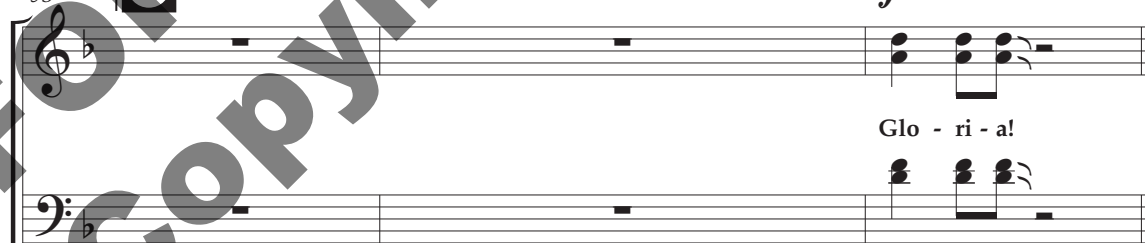
Gm⁷A⁷

91



93

61



Glo - ri - a! _____

Dm

N.C.

93



96

(SOLO ad lib with CHOIR)

Glo - ri - a! Glo - ri - a!

Dm G7 Dm G7

(Original groove)

99

Glo - ri - a!

Dm G7

102

unison

1

(to meas. 96)

Yes - ter - day, to - day, and for - ev - er,

unison

102

Gm7

Gm7
FGm
E

A7(#9#5)

1

N.C. (to meas. 96)

(b) (b) (b) (b)

104 2 (long fall, off by beat 4)

- er, Glo - ri - a!

N.C. Dm13 (roll chords)

107

107

3 3 3 3

The image shows a musical score for piano and voice. The score is divided into two systems. The first system starts at measure 104 and includes a vocal line with the lyrics "- er, Glo - ri - a!" and a piano accompaniment. The piano part features a "long fall, off by beat 4" and a "roll chords" section. The second system starts at measure 107 and includes a vocal line and a piano accompaniment. The piano part features triplets and a "roll chords" section. A large diagonal watermark "FOR PREVIEW ONLY" is overlaid on the page.