

# FOREVER REIGN

words and music by

**JASON INGRAM** and **REUBEN MORGAN**

arranged and orchestrated by **DAVE WILLIAMSON**

**Key** - A

**Tempo** - accented four

**Theme** - attributes of God

**Style** - contemporary praise and worship

**Duration** - 5:23

CD Anthem Tracks\*

6-34337-319582

005535783

Orchestration CD-ROM

6-34337-319797

005535794

**\*Orchestration not included on recorded product**

INSTRUMENTATION: Flute, Oboe, Clarinet, F Horn 1-2 (3), Trumpet 1-2, Trumpet 3, Trombone 1-2, Trombone 3/Tuba, Percussion 1-2, Rhythm, Violin 1-2, Viola, Cello, String Bass.

SUBSTITUTE PARTS: Alto Sax 1-2 (substitute for F Horn 1-2), Soprano Sax (substitute for Oboe), Tenor Sax/Baritone Treble Clef (substitute for Trombone 1-2), Bari Sax (substitute for Tuba), Clarinet 2 (substitute for Viola), Bass Clarinet (substitute for Cello), Keyboard String Reduction.

The rhythm part in this orchestration is designed to provide satisfying accompaniment throughout. However, keyboard players may find it helpful to reference certain passages in the choral score to supply the most supportive accompaniment.

Possession of a CCLI license does not grant permission to make copies of this music. For clarification of the rights CCLI grants, please call 1 (800) 234-2446.

# Forever Reign

Words and Music by  
JASON INGRAM and  
REUBEN MORGAN

Arranged by Dave Williamson

Moderate four ♩ = 83

1/8

A<sup>2</sup>

Synth. pad intro -----

A<sup>2</sup>

mf

mp

CHOIR unis. mp

You are

good, You are good when there's noth - ing good in me. You are

A<sup>2</sup>

mp

love, You are love, on dis - play for all to see. You are

E  
G#

11 light, You are light when the dark - ness clos - es in. You are

A<sup>2</sup>

13 hope, You are hope, You have cov - ered all my sin.

E  
G#

15

2/9

add WORSHIP LEADER/SOLO (*ad lib. fills*)

You are

A<sup>2</sup>

17

peace, You are peace when my fear is crip - pl - ing. You are

A<sup>2</sup>

19

true, You are true, e - ven in my wan - der - ing. You are

E  
G#

21

joy, You are joy, You're the rea - son that I sing. You are

A<sup>2</sup>

life, You are life, in You death has lost it's sting.

23

life, You are life, in You death has lost it's sting.

E  
G#

And oh, I'm run - ning to Your

25

(3/10)

(W.L./SOLO out)

CHOIR only

And oh, I'm run - ning to Your

A<sup>2</sup>

A

And oh, I'm run - ning to Your

28

arms, I'm run - ning to Your arms; The rich - es of Your

E  
A

F#m<sup>7</sup>

30

love will al - ways be e - nough. Noth - ing com - pares\_\_

E

D<sup>2</sup>

32

to Your\_\_ em - brace.\_\_ Light of the world,\_\_

F#m<sup>7</sup>

E

D<sup>2</sup>

34

*mf*

— for - ev - er reign. — You are

F#m<sup>7</sup> E D<sup>2</sup>

37

more, You are more than my words will ev - er say. You are

A<sup>2</sup>

*mf*

39

Lord, You are Lord, all cre - a - tion will pro - claim. You are

E G#



41

here, You are here, in Your pres - ence I'm made whole. You are

A<sup>2</sup>

43

God, You are God, of all else I'm let - ting go.

E/G<sup>#</sup>

45

(4/11)

Oh, I'm run - ning to Your

Bass: optional

A<sup>2</sup>

A

48

arms, I'm run - ning to Your arms; The rich - es of Your

E  
A

F#m<sup>7</sup>

50

love will al - ways be e - nough. Noth - ing com - pares\_\_

E

D<sup>2</sup>

52

to Your\_\_ em - brace.\_\_ Light of the world,\_\_

F#m<sup>7</sup>

E

D<sup>2</sup>

54 1 (to meas. 48)

for - ev - er reign. — I'm run - ning to Your

1 (to meas. 48)

F#m<sup>7</sup> E A

56 2 (5/12)

for - ev - er reign.

2 F#m<sup>7</sup> E D<sup>2</sup>

59 W.L./SOLO (with some freedom)

*mp* My heart will sing, no oth - er name, Je - sus,

F#m D A

*mp*

62

Je - sus, \_\_\_\_\_ My heart will sing, \_\_\_\_\_

E G# F#m

64

\_\_\_\_\_ no oth - er name, \_\_\_\_\_ Je - sus, \_\_\_\_\_ Je - sus, \_\_\_\_\_

D A E G#

67

CHOIR  
(W.L./SOLO *continue ad lib. fills*)  
*mp*

\_\_\_\_\_ My heart will sing, \_\_\_\_\_ no oth - er name, \_\_\_\_\_ Je - sus, \_\_\_\_\_

F#m D A

70

Je - sus. My heart will sing,

E F#m

72

no oth - er name, Je - sus,

D A

74

Je - sus.

E D D<sup>2</sup>

(W.L./SOLO out)

77

*mf*

Oh, I'm run - ning to Your arms, I'm run - ning to Your

Bass: optional

A

E  
A*mp*

79

arms; The rich - es of Your love will al - ways be e -

F#m<sup>7</sup>

E

81

*building*

nough. Noth - ing com - pares to Your em - brace.

D<sup>2</sup>F#m<sup>7</sup>

E

*building*

83

Light of the world, — for - ev - er reign. —

D F#m<sup>7</sup> E

85

*f* I'm run - ning to Your arms, I'm run - ning to Your

A E  
A

*f*

87

arms; The rich - es of Your love will al - ways be e -

F#m<sup>7</sup> E

89

nough. Noth - ing com - pares — to Your — em - brace. —

$D^2$   $F\sharp m^7$  E

91

— Light of the world, — for - ev - er reign. —

$D^2$   $F\sharp m^7$  E

93

8 8

$D^2$  D

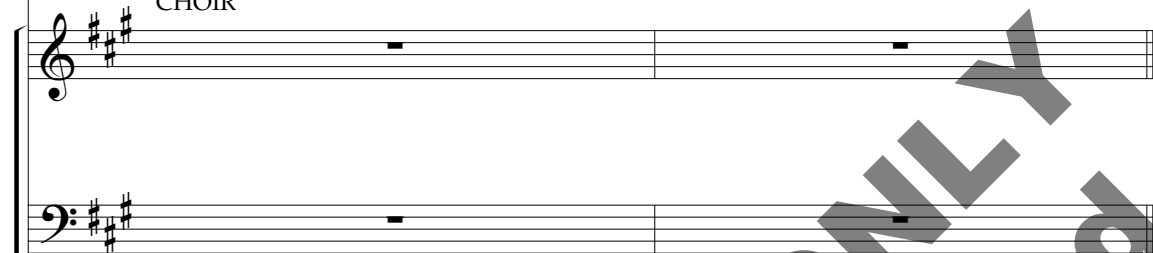


95

W.L./SOLO (*with some freedom*)

For - ev - er reign! \_\_\_\_\_

CHOIR



97



Oh, \_\_\_\_\_

no

*mp*

My heart will sing,

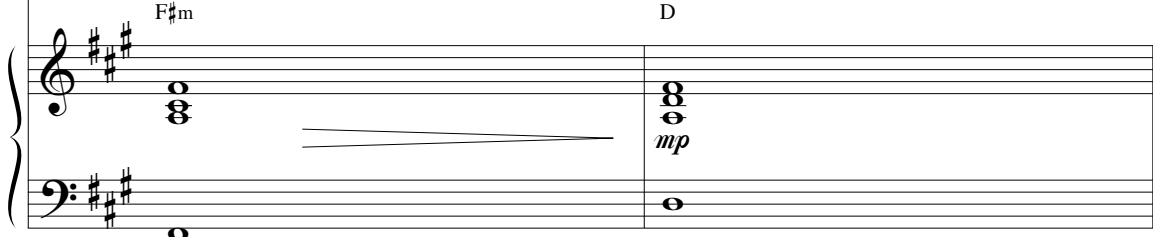
no oth - er name,

Tenor/Bass unis.



F#m

D



99

oth - er name, my Je - sus,

Je - sus, Je - sus,

A E

101 *Slower*

Je - sus.

F#m 4

*Slower*



**lifewayworship.com**

*Your one-stop worship resource!*



*The choral club  
that stands out!*



005535041



*For more information on The Red Box -  
Call 800.436.3869  
or visit [LifeWay.com/TheRedBox](http://LifeWay.com/TheRedBox).*