

# AMERICA'S BEST

Praise and Worship Series

FOR CHOIR AND  
CONGREGATION



PHIL BARFOOT

## Lead Me to the Cross

*Words and Music by* **BROOKE FRASER LIGERTWOOD**

*Arranged and Orchestrated by* **CLIFF DUREN**

**Key** - C#m  
**Tempo** - slow four  
**Themes** - cross; His love; surrender  
**Style** - light ballad  
**Duration** - 6:47

CD Anthem Tracks

6-34337-307015

005519051

Orchestration CD-ROM

6-34337-307152

005518931

*For downloadable Powerpoint® lyrics, SATB rehearsal tracks,  
and Multi-track Stem MP3s, go to [www.lifeway.com/worship](http://www.lifeway.com/worship).*

Scripture quotation on page 3 taken from the Holy Bible, New International Version, copyright © 1973, 1978, 1984 by International Bible Society. Used by permission.

INSTRUMENTATION: Flute, Oboe, English Horn, Clarinet, Trumpet 1, Trumpet 2 & 3, Horn 1 & 2, Trombone 1 & 2, Trombone 3, Tuba, Rhythm, Harp, Percussion 1 & 2, Violin 1 & 2, Viola, Cello, String Bass

SUBSTITUTION PARTS: Alto Sax 1 & 2 (substitute for F Horn 1 & 2), Tenor Sax/Baritone TC (substitute for Trombone 1 & 2), Soprano Sax (substitute for Oboe), Clarinet 2 (substitute for Oboe), Bassoon (substitute for Cello), Bass Clarinet (substitute for Cello), Clarinet 3 (substitute for Viola), Keyboard String Reduction

Possession of a CCLI license does not grant permission to make copies of this music.  
For clarification of the rights CCLI grants, please call 1 (800) 234-2446.

# OPTIONAL NARRATION

*(begin m. 6)*

WORSHIP LEADER 1: He grew up before Him like a tender shoot,  
and like a root out of dry ground.  
He had no beauty or majesty to attract us to Him,  
nothing in His appearance that we should desire Him.

WORSHIP LEADER 2: He was despised and rejected by mankind,  
a man of suffering, and familiar with pain.  
Like one from whom people hide their faces  
He was despised, and we held Him in low esteem.

Surely He took up our pain  
and bore our suffering,  
yet we considered Him punished by God,  
stricken by Him, and afflicted.

WORSHIP LEADER 1: But He was pierced for our transgressions,  
He was crushed for our iniquities;  
the punishment that brought us peace was on Him,  
and by His wounds we are healed.  
We all, like sheep, have gone astray,  
each of us has turned to our own way;  
and the LORD has laid on Him  
the iniquity of us all.

WORSHIP LEADER 2: He was oppressed and afflicted,  
yet He did not open His mouth;  
He was led like a lamb to the slaughter,  
and as a sheep before its shearers is silent,  
so He did not open His mouth.  
By oppression and judgment He was taken away.  
Yet who of His generation protested?  
For He was cut off from the land of the living;  
for the transgression of my people He was punished.  
*(Isaiah 53:2-8, NIV)*

For Choir and Congregation

# Lead Me to the Cross

Words and Music by  
**BROOKE FRASER LIGERTWOOD**  
 Arranged by Cliff Duren

**With feeling** ♩ = 66

**JESUS, KEEP ME NEAR THE CROSS (Crosby/Doane)**

**1**  **8**

**Ab(no3)** **Ab**

**5** **D<sup>b</sup>** **Ab** **(narration begins)** **Ab(no3)**

**9** **E<sup>b</sup>** **Ab** **E<sup>b</sup>** **G** **Fm** **C** **E**

**13** **Fm** **E<sup>b</sup>** **B<sup>b</sup>2** **D** **D<sup>b</sup>2** **Ab** **C**

**(b)**



© Copyright 2004 and this arrangement © copyright 2012 Hillsong Publishing (APRA)  
 (admin. in the U.S. and Canada at [EMICMGPublishing.com](http://EMICMGPublishing.com)).  
 All rights reserved. Used by permission.

Possession of a CCLI license does not grant permission to make copies of this piece of music.  
 For clarification of the rights CCLI grants, please call 1-800-234-2446.

17  $B\flat m7$   $A\flat$   $E\flat$   
G  $A\flat$  E  $E^2$   
G $\sharp$

21 A  $A^2$  C $\sharp$  E  $B^2$  A  $E^2$  G $\sharp$

25  $E\sharp^2$  A $\sharp$   $B^7$ sus B C $\sharp$ m  $G\sharp$  B $\sharp$

29 C $\sharp$ m B  $F\sharp^2$  A $\sharp$  A $^2$   $E^2$  G $\sharp$

33  $B^7$ sus C $\sharp$ m  $A^{\flat 6}$  C

37 N.C. E B  $F\sharp m7$   $E^2$  G $\sharp$  A $^2$  B  $A^2$  C $\sharp$  B $\sharp$

41

$\frac{A}{C\#}$   $\frac{E}{B}$   $A$   $\frac{E}{G\#}$   $F\#m7$   $E$   $\frac{B}{D\#}$   $E$

*molto rit.*

Pop groove ♩ = 70  
 Optional Starting Point

$\frac{2}{9}$

45

$C\#m$   $B$   $AM7$   $C\#m$   $B$

*mp*

Optional WORSHIP LEADER throughout  
 SOLO *mp*

48

$AM7$   $C\#m$   $B$

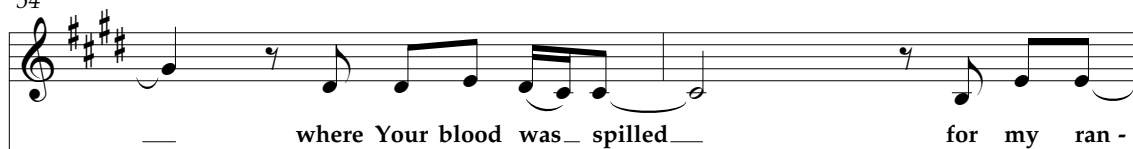
Sav-ior, I come;— qui-et my soul—

51

$AM7$   $E$   $B$   $C\#m$

Re-mem - ber— re-demp-tion's hill—

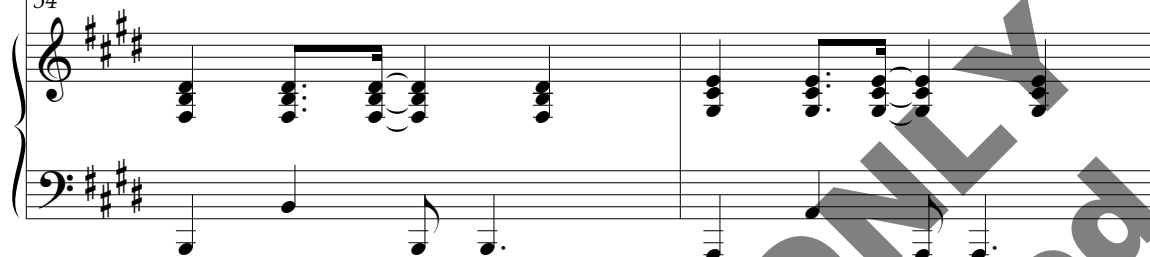
54



B

AM<sup>7</sup>

54



56

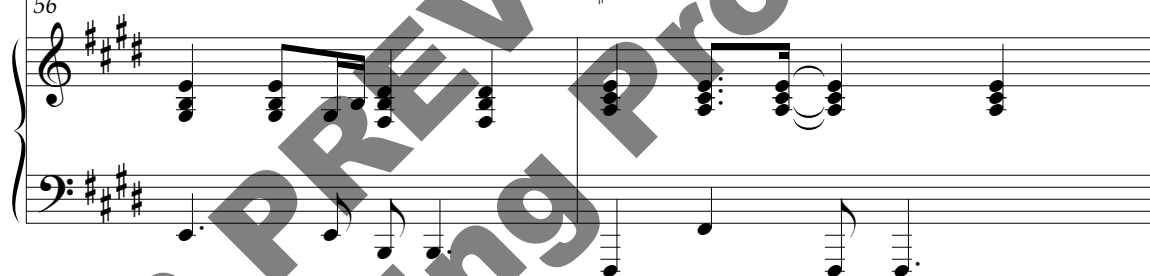


E

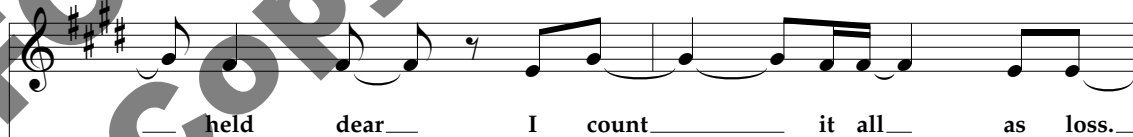
B

F<sup>#</sup>m<sup>7</sup>

56



58



B

C<sup>#</sup>m

B

58



60

CHOIR: unison  
*mp*

Lead me to the cross — where Your love poured out.

60 AM7 A E

62

Bring me to my knees; — Lord, I lay me down.

62 B A E



64

Rid me of my - self, I be - long to You.

64

B C#m7 A E

66

*unison* Oh, lead me, lead me to the cross.

*unison*

B F#m7 A Bsus

66

69

4/11

69

C#m B AM7 C#m B

*mf*

*mf*

You were as I, — tempt-ed and tried:—

72

AM7

E

C#m

B

75

hu - man. The Word be-came flesh, —

75

AM7

E

B

D#

C#m

78

bore my sin and death. —

Now You're ris -

78

B

AM7

80

*building**unison*

en. — Ev - 'ry - thing - I once -

*unison*

E B F#m7

80

*building*

*building*

82

5/12

— held dear — I count it all as loss. —

— held dear — I count it all as loss. —

82

B

C#m

B

B C#m B

84

*f* Lead me to the cross — where Your love poured out. —

*f* Lead me to the cross — where Your love poured out. —

84

AM7

N.C.

A<sup>2</sup>

E(no3)

AM7 N.C. A<sup>2</sup> E(no3)

Bring me to my knees; Lord, I lay me down.

B

A<sup>2</sup>

E(no3)

Rid me of my - self; I be - long to You.

B

C#m7

A<sup>2</sup>

E(no3)

Oh, lead me, lead me to the cross.

B

F#m7

A<sup>2</sup>

Bsus

B

93 *mp*

To Your heart,

93 C#m A<sup>2</sup> E A<sup>2</sup>

*sub. p*

96

to Your heart,

96 B E A<sup>2</sup>

*grad. cresc.*

98 *mf*

lead me to Your heart,

98 B E A<sup>2</sup>

*mf*

*f*

lead me to\_\_ Your heart.

100

B

E

A<sup>2</sup>*f*

102

*ff*

Lead me to the cross\_\_ where Your love poured\_\_ out.

102

B

N.C.

A

E

*ff*

104

Bring me to my knees;\_\_ Lord, I lay me\_\_ down.

104

B

A

E

106

Rid me of my - self; I be - long to You.

B C#m7 A E

106

106

108

Oh, lead me,

unison

B F#m7

108

108

110

(Back to m. 103)

unison

2

lead me to the cross

110

(Back to m. 103)

A Bsus F#m7

2

16

unison  
*mf*

112

lead me to the cross, \_

112

A<sup>2</sup>B<sub>sus</sub>C<sup>#</sup>m<sup>7</sup>

B

*mf*

114

lead me to the cross, \_

*mp**rit.*

lead me to the \_

114

A<sup>2</sup>B<sub>sus</sub>

B

C<sup>#</sup>m<sup>7</sup>

B

A<sup>2</sup>B<sub>sus</sub>

B

*rit.*

117

cross.

117

C<sup>#</sup>mC<sup>#</sup>m<sup>9</sup>

005519029



6 34337 30691 9